

Flute

BandFolio

Band Method

Book 1

To the student:

Congratulations on your decision to join the band. I am sure that you will find it a rewarding and fun experience, and it may lead to a life-long love of playing music. If you listen carefully and follow the recommendations of your band director, you will be making beautiful music and having a lot of fun in a very short time.

The key to getting a good start in band is practice. Your band director will recommend how much time you should practice each day. In order to get the most out of your practice sessions you should:

- Warm up. your band director will recommend a procedure for preparing your body and your instrument to play.
- Set a goal for each practice session.
- Practice the hard sections first, and break them down into smaller parts. Then put the parts together.
- Play something fun at the end of each practice session.
- Practice every day.

By working together with your band director and your classmates, band will become the high point of your school day, and will lead to years of musical enjoyment.



Jim Evans

bandfolio.com

Music Education Resources

© 2000 Jim Evans
BandFolio.com

Flute

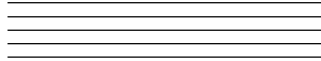
Reference Page

The Musical Alphabet

A B C D E F, & G.

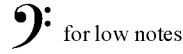
These letters repeat over and over as needed. As you go through the letters, the notes sound higher.

Staff



Five lines (and four spaces) on which music is written

Bass Clef



for low notes

Treble Clef



for high notes

Look up notes you don't know on the *Grand Staff*.

Pitches on the Grand Staff

* Notes that go above and below the staff are written on *ledger lines*.

Lines & Spaces

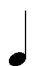
Many people have memorized the notes of the staff this way.

Basic rhythm concepts


Meter Signature

$\frac{4}{4}$ 4 beats in a measure
 $\frac{4}{4}$ receives one beat

Quarter note

 receives one beat in 4/4 meter signature

Quarter rest

 receives one beat of silence in 4/4 meter signature

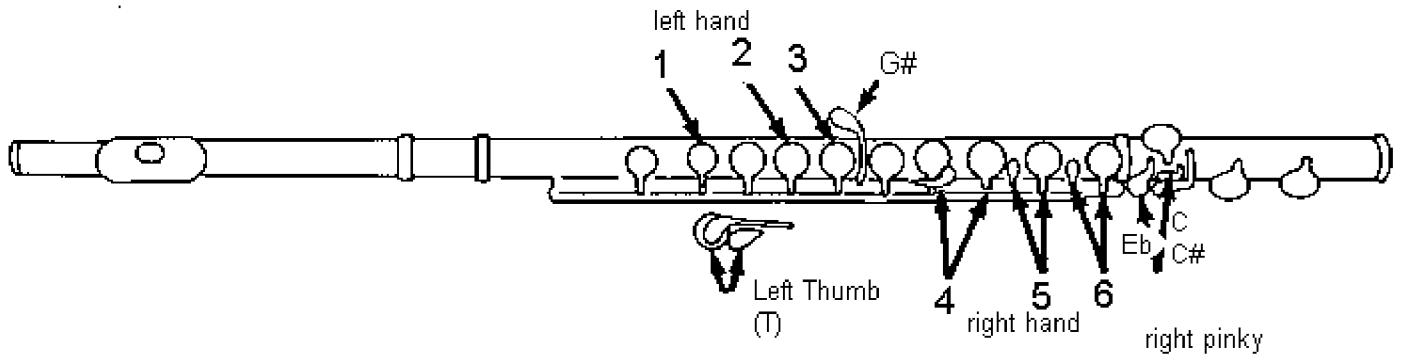
Measures & Barlines

barline  barline

the music between barlines is called a measure

Basic Fingering Chart

Memorize all notes, fingerings, and staff positions on this page



A



1 2 ---- Eb
T

A# Bb



1 -- 4 -- Eb
T

C



1 ----- Eb

D



- 2 3 4 5 6
T

D# Eb



- 2 3 4 5 6 Eb
T

F



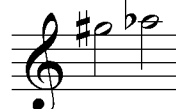
1 2 3 4 -- Eb
T

G



1 2 3 ---- Eb
T

G# Ab



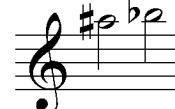
1 2 3 G# ---- Eb
T

A



1 2 ---- Eb
T

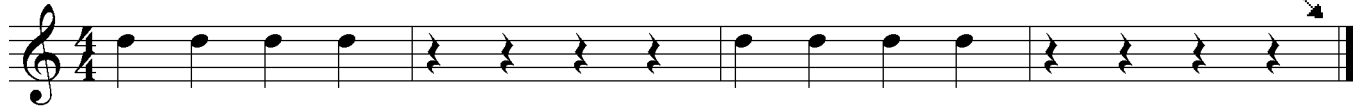
A# Bb



1 -- 4 -- Eb
T

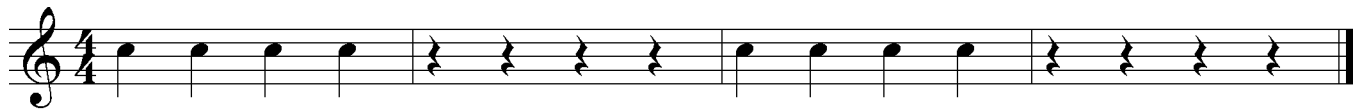
Flute

1. Our First Pitch



count: 1 & 2 & 3 & 4 & 1 & 2 & 3 & 4 & 1 & 2 & 3 & 4 & 1 & 2 & 3 & 4 &

2. Our Second Pitch



count: 1 & 2 & 3 & 4 & 1 & 2 & 3 & 4 & 1 & 2 & 3 & 4 & 1 & 2 & 3 & 4 &

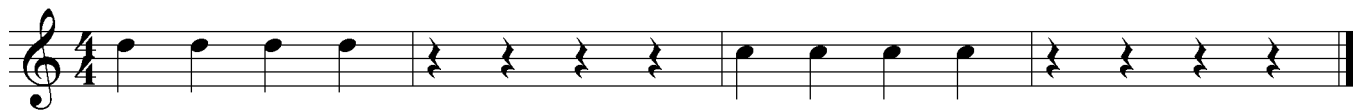
3. Our Third Pitch

b (flat) lasts for entire measure



count: 1 & 2 & 3 & 4 & 1 & 2 & 3 & 4 & 1 & 2 & 3 & 4 & 1 & 2 & 3 & 4 &

4. Think Fast!



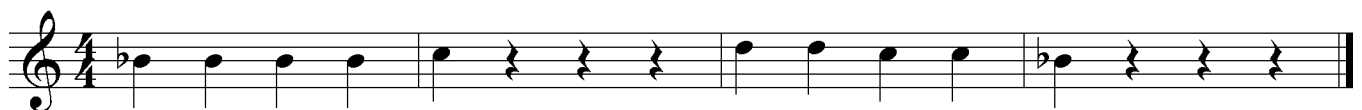
count: 1 & 2 & 3 & 4 & 1 & 2 & 3 & 4 & 1 & 2 & 3 & 4 & 1 & 2 & 3 & 4 &

5. Going Down



count: 1 & 2 & 3 & 4 & 1 & 2 & 3 & 4 & 1 & 2 & 3 & 4 & 1 & 2 & 3 & 4 &


6. Up & Down




count: 1 & 2 & 3 & 4 & 1 & 2 & 3 & 4 & 1 & 2 & 3 & 4 & 1 & 2 & 3 & 4 &

Flute

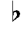
Half Note

 receives two beats in 4/4 meter signature

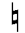
Half Rest

 receives two beats of silence in 4/4 meter signature

Accidentals

 flat (lowered)

 sharp (raised)

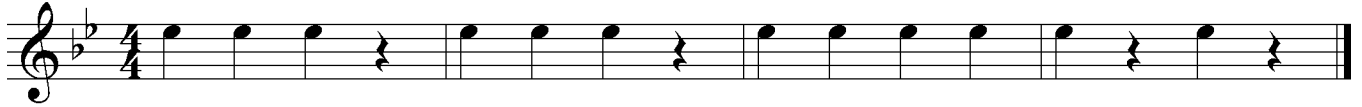
 natural (not sharp or flat)

Key Signature (B \flat Concert)
Your Key of B \flat

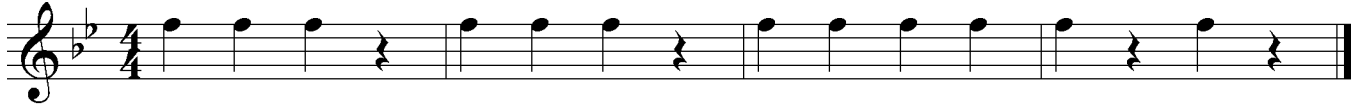


Tells whether notes are *flat*, *sharp*, or *natural*.

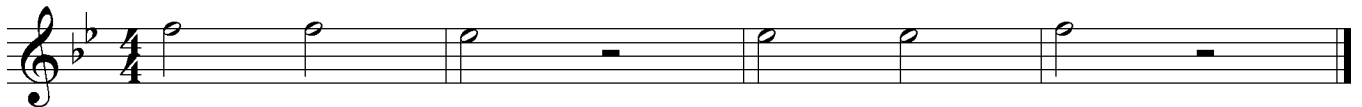
12. A New Note



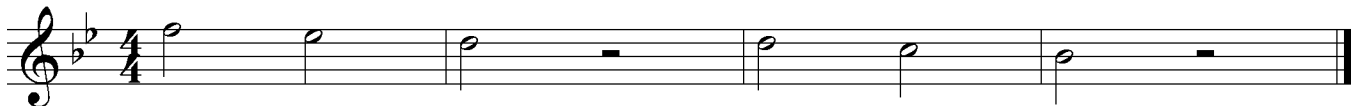
13. Another New Note



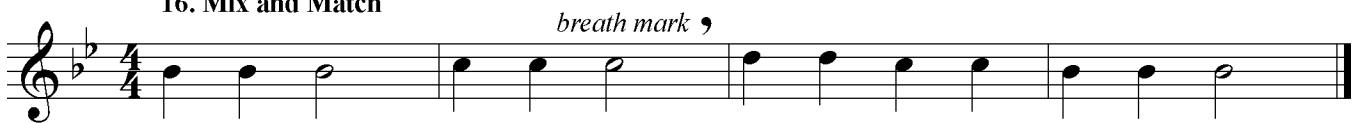
14. Go for Two!



15. Take Five



16. Mix and Match



Lines 16 & 17 may be played together.

17. Putting it Together



New Note

Flute

G

D.C. al Fine

Fine

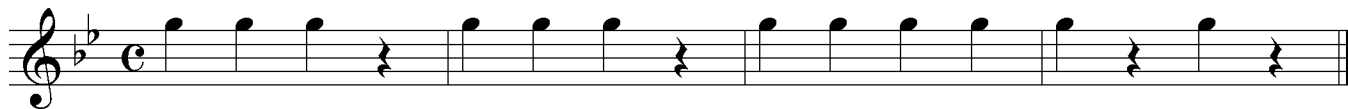


1 2 3 --- Eb
T

Go back to the beginning and play to the *Fine* mark.

The end

28. A New Note



29. Take it Easy



30. Make it Count



31. Twinkle, Twinkle



Fine




D.C. al Fine

32. Aura Lee



Eighth Notes

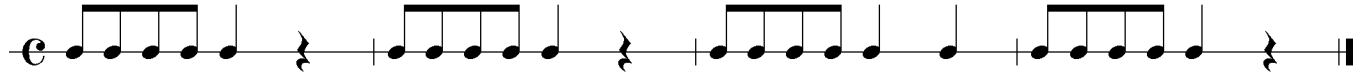
 Two eighth notes receive one beat in the 4/4 meter signature

Flute

33. Rhythm Study

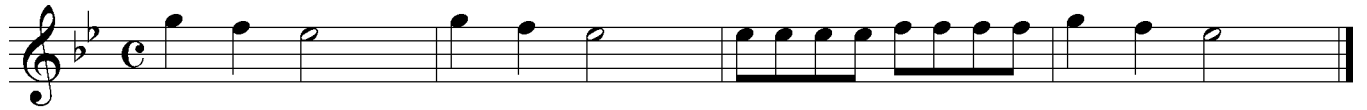
Clap

Write in the Counts

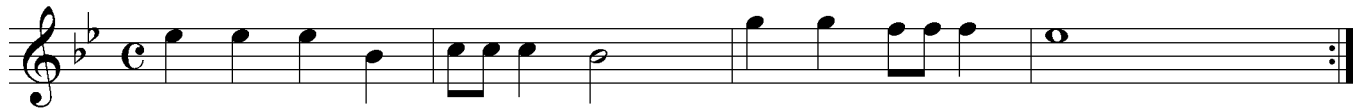


count:

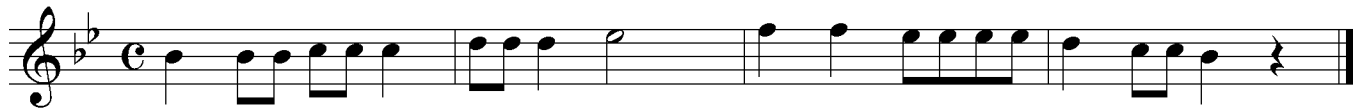
34. Hot Cross Buns



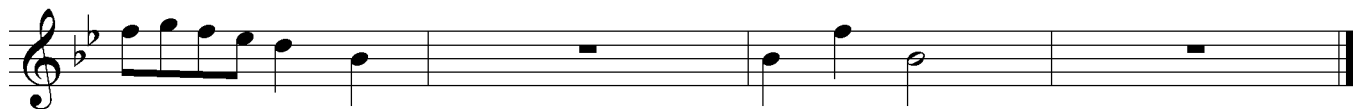
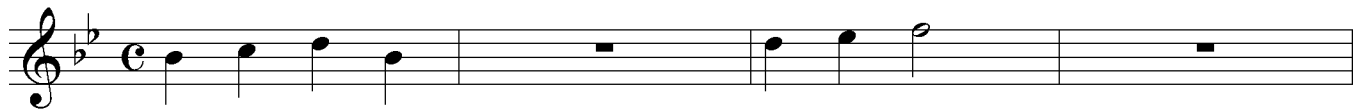
35. Farm Out!



36. Eighth Note Challenge



37. Asked & Answered




Special Holiday Concert Page

New Note **A** **Tie** **Harmony**

Flute

Connects two notes of the same pitch into one sound.

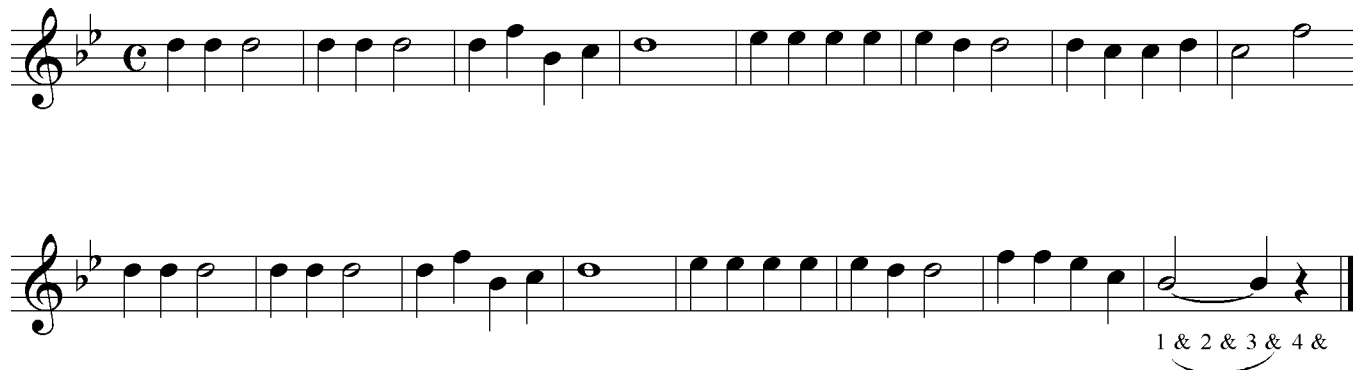
Two or more pitches sounding at the same time.



The 'New Note' section shows a treble clef with a single quarter note 'A' on the second line. The 'Tie' section shows two quarter notes on the same line connected by a horizontal line. The 'Harmony' section shows two quarter notes on different lines connected by a horizontal line.

38. Jingle Bells

1 2 ---- Eb
T



Two staves of music for 'Jingle Bells' in 4/4 time, key of B-flat major. The first staff contains the first 12 measures, and the second staff contains the final 4 measures. A tie is shown at the end of the second staff, with the counting '1 & 2 & 3 & 4 &' written below it.

39. Jolly Old St. Nicholas



Four staves of music for 'Jolly Old St. Nicholas' in 4/4 time, key of B-flat major. The first staff contains the first 12 measures, the second staff contains the next 12 measures, the third staff contains the next 12 measures, and the fourth staff contains the final 4 measures.

40. Up On the Housetop



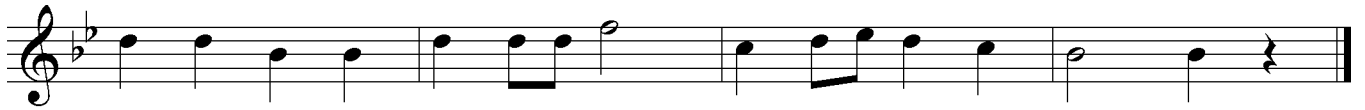
Two staves of music for 'Up On the Housetop' in 4/4 time, key of B-flat major. The first staff contains the first 12 measures, and the second staff contains the final 4 measures.

Flute

Meter Signature
 $\frac{3}{4}$ 3 beats in a measure
receives one beat

Dotted Half Note
receives three beats in $\frac{3}{4}$
or $\frac{4}{4}$ meter signature

41. Skip To My Lou



42. Long, Long Ago



43. The Dotted Half Note



44. Oh, Dear, What Can the Matter Be?



Flute

New Note

G# A \flat

1 2 3 G# - - - E \flat
T

Key Signature

Key of E \flat Concert
Your Key of E \flat

Pick-up Notes

Notes that come before the first full measure of a piece.

First & Second Endings

1.	2.
:	

Play to the repeat sign, then go back to the beginning. When you get to the first ending, skip over it, and go to the second ending.

45. A New Note

46. There's a Hole in the Bucket

Where's the third beat?

pick-up notes

47. The Man on the Flying Trapeze

pick-up note

48. Johnny Has Gone

49. When Jesus Wept

William Billings
adapted

1 2 3 4

Flute

New Note

A# Bb

1 -- 4 -- Eb
T

Fermata

Hold notes under a fermata longer than usual, or until your director cuts you off.

Dynamics
p piano - soft
f forte - loud

Note
Dynamics are always at the director's discretion.

50. Chorale

51. A New Note

52. Christmas Greetings (A Four Part Round)

53. Red River Valley

54. Mexican Clapping Song

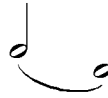
Flute

Dynamics

mp moderately soft

mf moderately loud

Slur



Connects notes of different pitch. Tongue only the first note of a slur.

Meter Signature

$\frac{2}{4}$ two beats in a measure
 $\frac{3}{4}$ receives one beat

55. Lip Slurs

Musical notation for exercise 55, Lip Slurs. It is a single staff in treble clef with a key signature of two flats (Bb, Eb) and a common time signature (C). The piece consists of three measures, each containing a slur over a sequence of notes: a quarter note followed by two eighth notes. The first measure starts on G4, the second on F4, and the third on E4. The dynamic marking *mf* is placed below the first measure.

56. Oranges, Lemons

Musical notation for exercise 56, Oranges, Lemons. It is a single staff in treble clef with a key signature of two flats (Bb, Eb) and a 3/4 time signature. The piece consists of eight measures, each containing a slur over a sequence of notes: a quarter note followed by two eighth notes. The notes are: G4, F4, E4; G4, F4, E4; G4, F4, E4; G4, F4, E4; G4, F4, E4; G4, F4, E4; G4, F4, E4; G4, F4, E4. The dynamic marking *mf* is placed below the first measure.

57. Roll Over

Musical notation for exercise 57, Roll Over. It is a single staff in treble clef with a key signature of two flats (Bb, Eb) and a common time signature (C). The piece consists of six measures, each containing a slur over a sequence of notes: a quarter note followed by two eighth notes. The notes are: G4, F4, E4; G4, F4, E4; G4, F4, E4; G4, F4, E4; G4, F4, E4; G4, F4, E4. The dynamic marking *mp* is placed below the first measure, and *mf* is placed below the fourth measure.

58. Simple Gifts

Musical notation for exercise 58, Simple Gifts. It is a single staff in treble clef with a key signature of two flats (Bb, Eb) and a 2/4 time signature. The piece consists of eight measures, each containing a slur over a sequence of notes: a quarter note followed by two eighth notes. The notes are: G4, F4, E4; G4, F4, E4; G4, F4, E4; G4, F4, E4; G4, F4, E4; G4, F4, E4; G4, F4, E4; G4, F4, E4. The dynamic marking *p* is placed below the first measure.

Musical notation for exercise 58, Simple Gifts (continued). It is a single staff in treble clef with a key signature of two flats (Bb, Eb) and a 2/4 time signature. The piece consists of eight measures, each containing a slur over a sequence of notes: a quarter note followed by two eighth notes. The notes are: G4, F4, E4; G4, F4, E4; G4, F4, E4; G4, F4, E4; G4, F4, E4; G4, F4, E4; G4, F4, E4; G4, F4, E4.


59. Slur Study

Musical notation for exercise 59, Slur Study. It is a single staff in treble clef with a key signature of two flats (Bb, Eb) and a common time signature (C). The piece consists of three measures, each containing a slur over a sequence of notes: a quarter note followed by two eighth notes. The notes are: G4, F4, E4; G4, F4, E4; G4, F4, E4. The dynamic marking *f* is placed below the first measure, and *mp* is placed below the third measure.


Flute

Articulation
How a note is played


Accent

 Emphasize notes with an accent mark.

Legato

 *Smoothly*
Use a soft attack, and hold note for full value.

Staccato

 *Short*
Play in a *detached*, or separated style.

60. Articulation Study

Musical notation for '60. Articulation Study' in treble clef, common time (C). The piece consists of four measures. The first measure contains four quarter notes with horizontal lines above them. The second measure is a whole rest. The third measure contains four quarter notes with dots above them. The fourth measure contains four quarter notes with accent marks above them. The dynamic marking *mp* is placed below the first measure.

61. Surprise!

Franz Josef Haydn
adapted

Musical notation for '61. Surprise!' (first line) in treble clef, 2/4 time, key of B-flat major. The piece consists of eight measures. The first four measures contain quarter notes with dots above them. The fifth measure is a half note with a horizontal line above it. The sixth and seventh measures contain quarter notes with dots above them. The eighth measure is a half note with a horizontal line above it. The dynamic marking *p* is placed below the first measure.

Musical notation for '61. Surprise!' (second line) in treble clef, 2/4 time, key of B-flat major. The piece consists of eight measures. The first four measures contain quarter notes with dots above them. The fifth measure is a half note with a horizontal line above it. The sixth and seventh measures contain quarter notes with dots above them. The eighth measure is a half note with a horizontal line above it and an accent mark above it. The dynamic marking *f* is placed below the eighth measure.

62. Bingo

Musical notation for '62. Bingo' (first line) in treble clef, common time (C), key of B-flat major. The piece consists of eight measures. The first four measures contain quarter notes with horizontal lines above them. The fifth measure is a half note with a horizontal line above it. The sixth and seventh measures contain quarter notes with horizontal lines above them. The eighth measure is a half note with a horizontal line above it and an accent mark above it. The dynamic marking *mf* is placed below the first measure, and *f* is placed below the sixth measure.

Musical notation for '62. Bingo' (second line) in treble clef, common time (C), key of B-flat major. The piece consists of eight measures. The first two measures contain quarter notes with horizontal lines above them. The third measure contains three quarter notes with accent marks above them. The fourth measure is a half note with a horizontal line above it. The fifth and sixth measures contain quarter notes with horizontal lines above them. The seventh and eighth measures contain quarter notes with horizontal lines above them. The dynamic marking *f* is placed below the third measure.

63. Pictures At an Exhibition

Majestically

Modest Mussorgsky
adapted

Musical notation for '63. Pictures At an Exhibition' in treble clef, common time (C), key of B-flat major. The piece consists of eight measures. The first four measures contain quarter notes with accent marks above them. The fifth measure is a half note with a horizontal line above it. The sixth and seventh measures contain quarter notes with horizontal lines above them. The eighth measure is a half note with a horizontal line above it and an accent mark above it. The dynamic marking *f* is placed below the first measure.

Flute

New Note

A

1 2 ---- Eb
T

Tempo *how fast or slow a piece is played*

Allegro *Fast*

Moderato *Moderate*

Andante *Slow, walking speed*

64. Rhythm Study

Eighth Note & Eighth Rest

1 &

Moderato

mp

65. A New Note

Moderato

mf

66. March Madness

Allegro

f

mf

67. Morning

Andante

Edvard Grieg

mp

68. A Mighty Fortress is Our God

Andante

f

Flute

Tempo

Dotted Quarter Note - Eighth Note

Largo

Very slow



69. B \flat Concert Scale

Moderato

mf

70. Rhythm Study

count: 1 & 2 & 3 & 4 & 1 & 2 & 3 & 4 & 1 & 2 & 3 & 4 & 1 & 2 & 3 & 4 &

71. Theme from Symphony No. 9

Largo

Antonin Dvorák

p

72. Kum Bah Yah

Andante

mp

73. Finale (from The Firebird Suite)

Largo

Igor Stravinsky

p

Flute

Meter Signature

Cut Time

♩ or ♪ two beats in a measure
♩ receives one beat

Sixteenth Note Combinations



1 e & a 1 e & 1 & a

74. Rhythm Study

Moderato



count: 1 & 2 & 3 e & a 4 & 1 & 2 e & 3 & 4 & 1 & a 2 & 3 e & 4 & 1 & 2 e & a 3 & 4 &

mf

75. Button, You Must Wander

Allegro



mf

76. Bright Eyes Will Find You

Andante



mf

Compare this piece to number 75. How are they alike? How are they different?

77. Ten Little Indians Write in the Counts

Moderato



mp

78. Name That Tune Write in the Counts

Moderato



mf

Compare this piece to number 77. How are they alike? How are they different?

79. Skip To My Lou Revisited

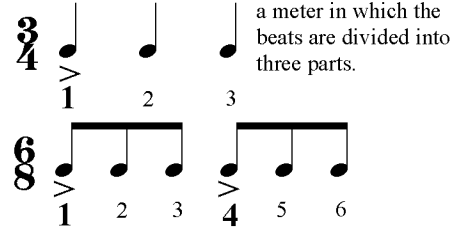
Moderato



f

Flute

Compound Meter



80. When the Saints Go Marching In

Allegro

81. Blow the Man Down

Allegro *in one*

82. For He's a Jolly Good Fellow

Allegro *in one*

83. Yankee Doodle

Allegro

Flute

Syncopation

1 & 2 & or 1 & 2 &

When longer notes fall on weak or unexpected beats.

Dotted Eighth Note & Sixteenth Note

1 e & a

(or in cut time) dotted quarternote & eighth note

1 e & a

84. Row, Row, Row Your Boat (a four-part round)

Moderato in one

1 2 3 4

85. Simple Meter

1 2 3 4

Compare this piece to number 84. How are they alike? How are they different?

86. Do, Lord

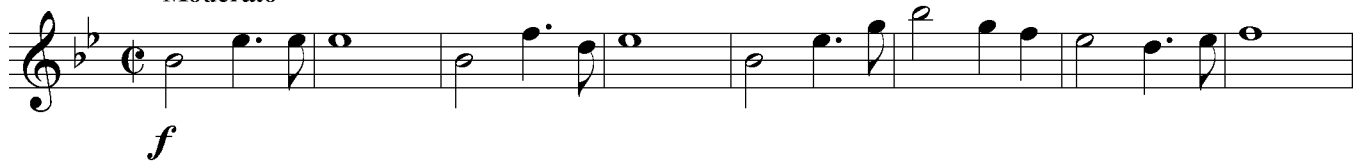
87. Shoo, Fly

Flute

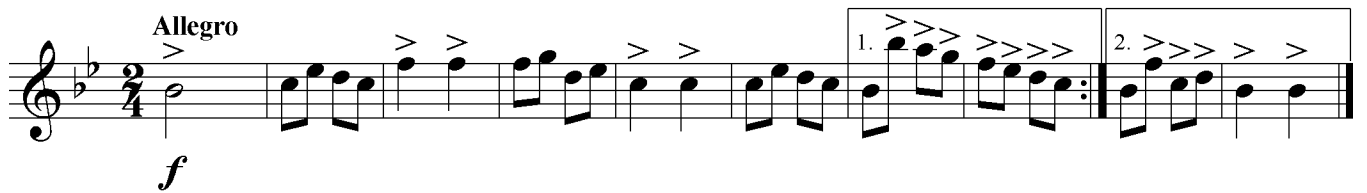
84. London Bridge Moderato



85. Bridal Chorus Moderato



86. Can-Can Allegro



87. Scale Study

Start slowly, then speed the tempo as you improve.



Major Scales

Flute

Make sure that you are playing the exact pitch that is shown. If the note name does not contain a *sharp* (\sharp), or a *flat* (\flat), it is *natural* (\natural).

B \flat Concert
Your Key of B \flat

Scale: B \flat C D E \flat F G A B \flat A G F E \flat D C B \flat

Arpeggio: B \flat D A B \flat F D B \flat

Detailed description: This block shows the B-flat major scale and its arpeggio for the flute. The scale is written on a single treble clef staff with a key signature of two flats (B-flat and E-flat). The notes are B-flat, C, D, E-flat, F, G, A, B-flat, followed by the descending sequence A, G, F, E-flat, D, C, B-flat. The arpeggio consists of the notes B-flat, D, A, B-flat, F, D, B-flat.

E \flat Concert
Your Key of E \flat

Scale: E \flat F G A \flat B \flat C D E \flat D C B \flat A \flat G F E \flat

Arpeggio: E \flat G D E \flat B \flat G E \flat

Scale

Detailed description: This block shows the E-flat major scale and its arpeggio for the flute. The scale is written on a single treble clef staff with a key signature of three flats (B-flat, E-flat, and A-flat). The notes are E-flat, F, G, A-flat, B-flat, C, D, E-flat, followed by the descending sequence D, C, B-flat, A-flat, G, F, E-flat. The arpeggio consists of the notes E-flat, G, D, E-flat, B-flat, G, E-flat. A second 'Scale' label is placed below the first scale line.

F Concert
Your Key of F

Scale: F G A B \flat C D E F E D C B \flat A G F

Arpeggio: F A E F C A F

Scale

Detailed description: This block shows the F major scale and its arpeggio for the flute. The scale is written on a single treble clef staff with a key signature of one flat (B-flat). The notes are F, G, A, B-flat, C, D, E, F, followed by the descending sequence E, D, C, B-flat, A, G, F. The arpeggio consists of the notes F, A, E, F, C, A, F. A second 'Scale' label is placed below the first scale line.

C Concert
Your Key of C

Scale: C D E F G A B C B A G F E D C

Arpeggio: C E B C G E C

Detailed description: This block shows the C major scale and its arpeggio for the flute. The scale is written on a single treble clef staff with a key signature of no sharps or flats. The notes are C, D, E, F, G, A, B, C, followed by the descending sequence B, A, G, F, E, D, C. The arpeggio consists of the notes C, E, B, C, G, E, C.

A \flat Concert
Your Key of A \flat

Scale: A \flat B \flat C D \flat E \flat F G A \flat G F E \flat D \flat C B \flat A \flat

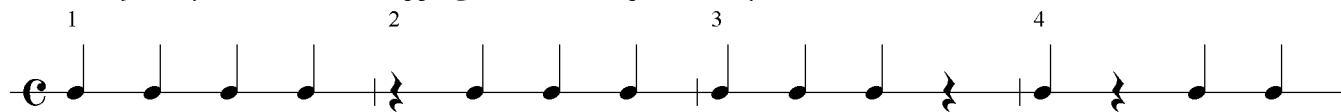
Arpeggio: A \flat C G A \flat E \flat C A \flat

Detailed description: This block shows the A-flat major scale and its arpeggio for the flute. The scale is written on a single treble clef staff with a key signature of three flats (B-flat, E-flat, and A-flat). The notes are A-flat, B-flat, C, D-flat, E-flat, F, G, A-flat, followed by the descending sequence G, F, E-flat, D-flat, C, B-flat, A-flat. The arpeggio consists of the notes A-flat, C, G, A-flat, E-flat, C, A-flat.

Rhythm Challenge

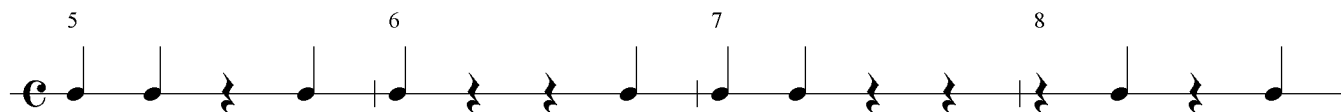
Go as far as you can without stopping, then work on problem rhythms.

1 2 3 4



Exercise 1: Four measures of quarter notes. Exercise 2: Quarter rest, quarter notes. Exercise 3: Quarter notes, quarter rest. Exercise 4: Quarter notes, quarter rest.

5 6 7 8



Exercise 5: Quarter notes, quarter rest. Exercise 6: Quarter notes, quarter rest, quarter rest. Exercise 7: Quarter notes, quarter rest, quarter rest. Exercise 8: Quarter notes, quarter rest, quarter rest.

9 10 11 12



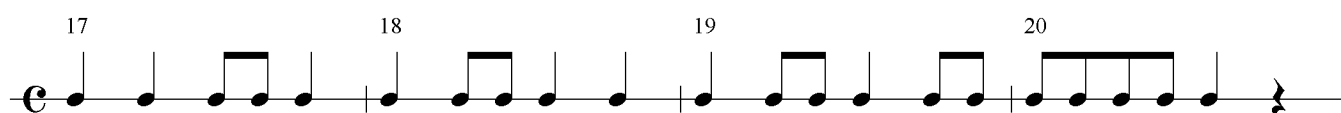
Exercise 9: Quarter notes. Exercise 10: Quarter notes, quarter rest. Exercise 11: Quarter notes, quarter rest. Exercise 12: Quarter notes, quarter notes.

13 14 15 16



Exercise 13: Quarter notes, quarter notes. Exercise 14: Quarter notes, quarter notes. Exercise 15: Quarter notes, quarter notes. Exercise 16: Quarter notes, quarter rest, quarter notes.

17 18 19 20



Exercise 17: Quarter notes, eighth notes. Exercise 18: Quarter notes, eighth notes. Exercise 19: Quarter notes, eighth notes. Exercise 20: Quarter notes, eighth notes, eighth notes, eighth notes, quarter rest.

21 22 23 24



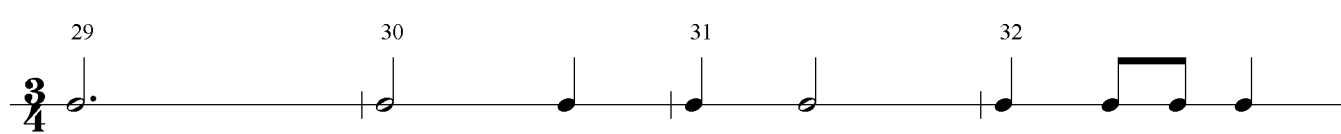
Exercise 21: Quarter notes, eighth notes, eighth notes. Exercise 22: Quarter notes, eighth notes, quarter rest. Exercise 23: Quarter notes, eighth notes, eighth notes. Exercise 24: Quarter notes, eighth notes, quarter rest, quarter notes.

25 26 27 28



Exercise 25: Quarter notes, eighth notes, quarter notes. Exercise 26: Quarter notes, quarter notes, quarter notes. Exercise 27: Quarter notes, eighth notes, quarter notes, quarter notes. Exercise 28: Quarter notes, eighth notes, quarter notes, quarter notes.

29 30 31 32



Exercise 29: 3/4 time signature, quarter notes. Exercise 30: Quarter notes, quarter notes. Exercise 31: Quarter notes, quarter notes. Exercise 32: Quarter notes, eighth notes, eighth notes, quarter notes.

Rhythm Challenge

33 34 35 36

3/4

37 38 39 40

C

41 42 43 44

C

45 46 47 48

C

49 50 51 52

C

53 54 55 56

2/4

57 58 59 60

2/4

61 62 63 64

6/8