

Baritone B.C.

BandFolio

Band Method

Book 1

To the student:

Congratulations on your decision to join the band. I am sure that you will find it a rewarding and fun experience, and it may lead to a life-long love of playing music. If you listen carefully and follow the recommendations of your band director, you will be making beautiful music and having a lot of fun in a very short time.

The key to getting a good start in band is practice. Your band director will recommend how much time you should practice each day. In order to get the most out of your practice sessions you should:

- Warm up. your band director will recommend a procedure for preparing your body and your instrument to play.
- Set a goal for each practice session.
- Practice the hard sections first, and break them down into smaller parts. Then put the parts together.
- Play something fun at the end of each practice session.
- Practice every day.

By working together with your band director and your classmates, band will become the high point of your school day, and will lead to years of musical enjoyment.



Jim Evans

bandfolio.com

Music Education Resources

© 2000 Jim Evans
BandFolio.com

Baritone

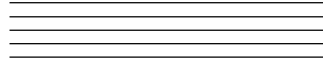
Reference Page

The Musical Alphabet

A B C D E F, & G.

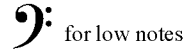
These letters repeat over and over as needed. As you go through the letters, the notes sound higher.

Staff

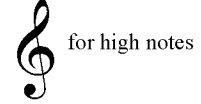


Five lines (and four spaces) on which music is written

Bass Clef



Treble Clef



Look up notes you don't know on the *Grand Staff*.

Pitches on the Grand Staff

Treble (G) Clef

Bass (F) Clef

* Notes that go above and below the staff are written on *ledger lines*.

Lines & Spaces

Many people have memorized the notes of the staff this way.

Every Good Boy Does Fine

Good Boys Do Fine Always Eat Grass

Basic rhythm concepts

Meter Signature

$\frac{4}{4}$ 4 beats in a measure
 $\frac{4}{4}$ receives one beat

Quarter note

receives one beat in 4/4 meter signature

Quarter rest

receives one beat of silence in 4/4 meter signature

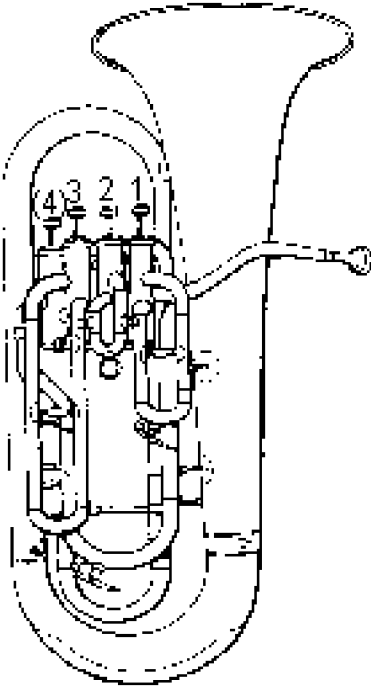
Measures & Barlines

barline barline

the music between barlines is called a measure

Basic Fingering Chart

Memorize all notes, fingerings, and staff positions on this page

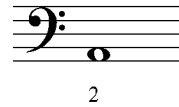


Press down the valves that match the numbers shown

Open means all valves are up.

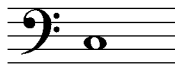
**If your baritone has a 4th valve, use that instead of the 1-3 valve combination.*

A



open

C



1 3

*4

D



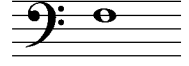
1 2

D# Eb



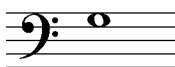
1

F



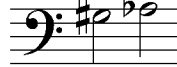
open

G



1 2

G# Ab



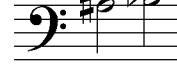
1

A



2

A# Bb



open

Baritone B.C.

1. Our First Pitch

Final Barline
(the end of a piece)



count: 1 & 2 & 3 & 4 & 1 & 2 & 3 & 4 & 1 & 2 & 3 & 4 & 1 & 2 & 3 & 4 &

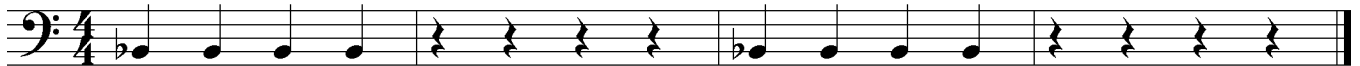
2. Our Second Pitch



count: 1 & 2 & 3 & 4 & 1 & 2 & 3 & 4 & 1 & 2 & 3 & 4 & 1 & 2 & 3 & 4 &

3. Our Third Pitch

b (flat) lasts for entire measure



count: 1 & 2 & 3 & 4 & 1 & 2 & 3 & 4 & 1 & 2 & 3 & 4 & 1 & 2 & 3 & 4 &

4. Think Fast!



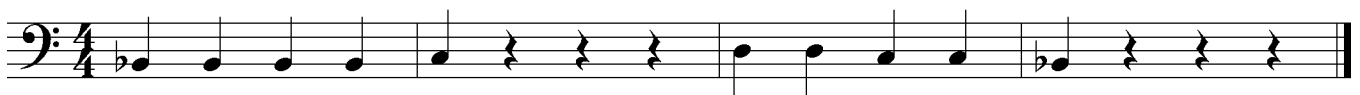
count: 1 & 2 & 3 & 4 & 1 & 2 & 3 & 4 & 1 & 2 & 3 & 4 & 1 & 2 & 3 & 4 &

5. Going Down



count: 1 & 2 & 3 & 4 & 1 & 2 & 3 & 4 & 1 & 2 & 3 & 4 & 1 & 2 & 3 & 4 &

6. Up & Down

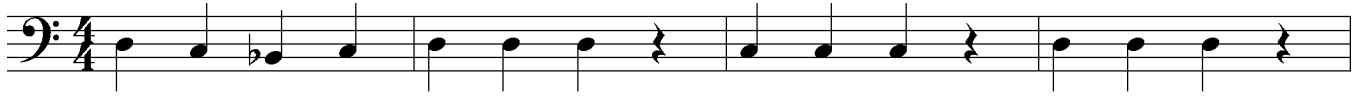


count: 1 & 2 & 3 & 4 & 1 & 2 & 3 & 4 & 1 & 2 & 3 & 4 & 1 & 2 & 3 & 4 &

Baritone B.C

7. Mary's Song *Write in the Counts*

Go to the next line!

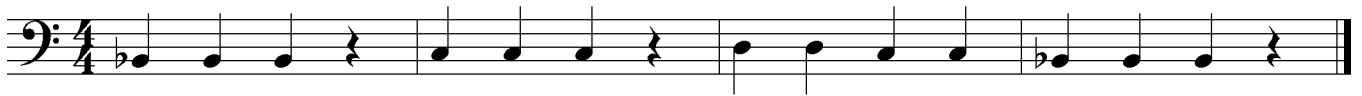


count:



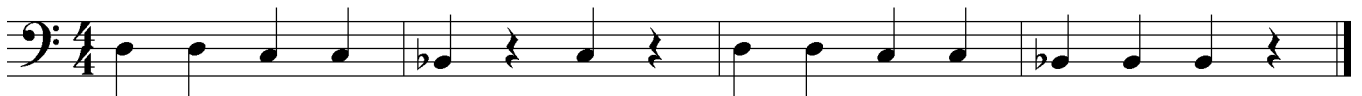
count:

8. Reading Music



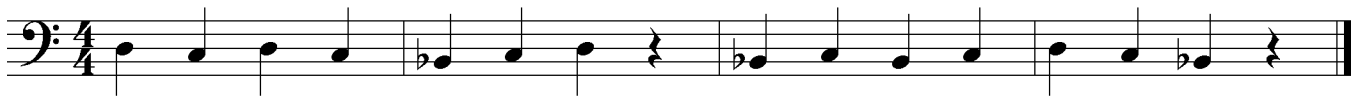
count:

9. Skill Builder



count:

10. Stepping Out



count:


11. More Stepping Out




count:

Baritone B.C.


Half Note


 receives two beats in 4/4 meter signature


Half Rest

 receives two beats of silence in 4/4 meter signature

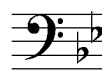
Accidentals

 flat (lowered)

 sharp (raised)

 natural (not sharp or flat)

Key Signature (B \flat Concert)
Your Key of B \flat



Tells whether notes are *flat, sharp, or natural.*

12. A New Note



Baritone B.C.

Common Time

C another way of writing the 4/4 meter signature

Whole Note

○ receives four beats in 4/4 meter signature

Whole Rest

— receives four beats of silence in 4/4 meter signature

Repeat Sign

|| Go back to the beginning and play the selection again

18. The Whole Thing

Musical notation for 'The Whole Thing' in common time, bass clef. It consists of four measures: the first measure contains a whole note, the second a whole rest, the third a whole note, and the fourth a whole rest. The piece ends with a repeat sign.

19. Whole & Half *Hint: A whole rest fills up a whole measure.*

Musical notation for 'Whole & Half' in common time, bass clef. It consists of four measures: the first measure contains a whole note, the second a whole rest, the third a half note, and the fourth a whole note. The piece ends with a repeat sign.

20. Play it Again, Sam!

Musical notation for 'Play it Again, Sam!' in common time, bass clef. It consists of four measures: the first measure contains a quarter note, the second a half note, the third a quarter note followed by an eighth note beamed together, and the fourth a quarter note followed by a whole rest. The piece ends with a repeat sign.

21. Claire de Lune

Musical notation for 'Claire de Lune' in common time, bass clef. It consists of four measures: the first measure contains a quarter note, the second a quarter note followed by an eighth note beamed together, the third a quarter note followed by an eighth note beamed together, and the fourth a whole note. The piece ends with a repeat sign.

22. Up & Down Again

Musical notation for 'Up & Down Again' in common time, bass clef. It consists of four measures: the first measure contains a quarter note, the second a quarter note followed by an eighth note beamed together, the third a quarter note followed by an eighth note beamed together, and the fourth a whole note. The piece ends with a repeat sign.

23. Skipping Around

Musical notation for 'Skipping Around' in common time, bass clef. It consists of four measures: the first measure contains a quarter note, the second a quarter note followed by an eighth note beamed together, the third a quarter note followed by an eighth note beamed together, and the fourth a whole note. The piece ends with a repeat sign.

Rhythm Review

Draw a line from the musical symbol to its name.



whole rest

half rest

quarter rest

whole note

half note

quarter note

Baritone B.C.


24. Count It Out

Two staves of musical notation in bass clef, 2/4 time, and B-flat major. The first staff contains four measures: a half note G2, a half note F2, a quarter note E2 followed by a quarter rest, and a quarter note D2 followed by a quarter note C2. The second staff contains four measures: a half note B1, a half note A1, a quarter note G1 followed by a quarter rest, and a quarter note F1 followed by a quarter note E1.

25. Bar None! *Draw in the barlines before you play.*

A single staff of musical notation in bass clef, 2/4 time, and B-flat major. The notation consists of a sequence of notes: G2, A2, B2, C3, D3, E3, F3, G3, A3, B3, C4, D4, E4, F4, G4, A4, B4, C5, D5, E5, F5, G5, A5, B5, C6, D6, E6, F6, G6, A6, B6, C7, D7, E7, F7, G7, A7, B7, C8, D8, E8, F8, G8, A8, B8, C9, D9, E9, F9, G9, A9, B9, C10, D10, E10, F10, G10, A10, B10, C11, D11, E11, F11, G11, A11, B11, C12, D12, E12, F12, G12, A12, B12, C13, D13, E13, F13, G13, A13, B13, C14, D14, E14, F14, G14, A14, B14, C15, D15, E15, F15, G15, A15, B15, C16, D16, E16, F16, G16, A16, B16, C17, D17, E17, F17, G17, A17, B17, C18, D18, E18, F18, G18, A18, B18, C19, D19, E19, F19, G19, A19, B19, C20, D20, E20, F20, G20, A20, B20, C21, D21, E21, F21, G21, A21, B21, C22, D22, E22, F22, G22, A22, B22, C23, D23, E23, F23, G23, A23, B23, C24, D24, E24, F24, G24, A24, B24, C25, D25, E25, F25, G25, A25, B25, C26, D26, E26, F26, G26, A26, B26, C27, D27, E27, F27, G27, A27, B27, C28, D28, E28, F28, G28, A28, B28, C29, D29, E29, F29, G29, A29, B29, C30, D30, E30, F30, G30, A30, B30, C31, D31, E31, F31, G31, A31, B31, C32, D32, E32, F32, G32, A32, B32, C33, D33, E33, F33, G33, A33, B33, C34, D34, E34, F34, G34, A34, B34, C35, D35, E35, F35, G35, A35, B35, C36, D36, E36, F36, G36, A36, B36, C37, D37, E37, F37, G37, A37, B37, C38, D38, E38, F38, G38, A38, B38, C39, D39, E39, F39, G39, A39, B39, C40, D40, E40, F40, G40, A40, B40, C41, D41, E41, F41, G41, A41, B41, C42, D42, E42, F42, G42, A42, B42, C43, D43, E43, F43, G43, A43, B43, C44, D44, E44, F44, G44, A44, B44, C45, D45, E45, F45, G45, A45, B45, C46, D46, E46, F46, G46, A46, B46, C47, D47, E47, F47, G47, A47, B47, C48, D48, E48, F48, G48, A48, B48, C49, D49, E49, F49, G49, A49, B49, C50, D50, E50, F50, G50, A50, B50, C51, D51, E51, F51, G51, A51, B51, C52, D52, E52, F52, G52, A52, B52, C53, D53, E53, F53, G53, A53, B53, C54, D54, E54, F54, G54, A54, B54, C55, D55, E55, F55, G55, A55, B55, C56, D56, E56, F56, G56, A56, B56, C57, D57, E57, F57, G57, A57, B57, C58, D58, E58, F58, G58, A58, B58, C59, D59, E59, F59, G59, A59, B59, C60, D60, E60, F60, G60, A60, B60, C61, D61, E61, F61, G61, A61, B61, C62, D62, E62, F62, G62, A62, B62, C63, D63, E63, F63, G63, A63, B63, C64, D64, E64, F64, G64, A64, B64, C65, D65, E65, F65, G65, A65, B65, C66, D66, E66, F66, G66, A66, B66, C67, D67, E67, F67, G67, A67, B67, C68, D68, E68, F68, G68, A68, B68, C69, D69, E69, F69, G69, A69, B69, C70, D70, E70, F70, G70, A70, B70, C71, D71, E71, F71, G71, A71, B71, C72, D72, E72, F72, G72, A72, B72, C73, D73, E73, F73, G73, A73, B73, C74, D74, E74, F74, G74, A74, B74, C75, D75, E75, F75, G75, A75, B75, C76, D76, E76, F76, G76, A76, B76, C77, D77, E77, F77, G77, A77, B77, C78, D78, E78, F78, G78, A78, B78, C79, D79, E79, F79, G79, A79, B79, C80, D80, E80, F80, G80, A80, B80, C81, D81, E81, F81, G81, A81, B81, C82, D82, E82, F82, G82, A82, B82, C83, D83, E83, F83, G83, A83, B83, C84, D84, E84, F84, G84, A84, B84, C85, D85, E85, F85, G85, A85, B85, C86, D86, E86, F86, G86, A86, B86, C87, D87, E87, F87, G87, A87, B87, C88, D88, E88, F88, G88, A88, B88, C89, D89, E89, F89, G89, A89, B89, C90, D90, E90, F90, G90, A90, B90, C91, D91, E91, F91, G91, A91, B91, C92, D92, E92, F92, G92, A92, B92, C93, D93, E93, F93, G93, A93, B93, C94, D94, E94, F94, G94, A94, B94, C95, D95, E95, F95, G95, A95, B95, C96, D96, E96, F96, G96, A96, B96, C97, D97, E97, F97, G97, A97, B97, C98, D98, E98, F98, G98, A98, B98, C99, D99, E99, F99, G99, A99, B99, C100, D100, E100, F100, G100, A100, B100, C101, D101, E101, F101, G101, A101, B101, C102, D102, E102, F102, G102, A102, B102, C103, D103, E103, F103, G103, A103, B103, C104, D104, E104, F104, G104, A104, B104, C105, D105, E105, F105, G105, A105, B105, C106, D106, E106, F106, G106, A106, B106, C107, D107, E107, F107, G107, A107, B107, C108, D108, E108, F108, G108, A108, B108, C109, D109, E109, F109, G109, A109, B109, C110, D110, E110, F110, G110, A110, B110, C111, D111, E111, F111, G111, A111, B111, C112, D112, E112, F112, G112, A112, B112, C113, D113, E113, F113, G113, A113, B113, C114, D114, E114, F114, G114, A114, B114, C115, D115, E115, F115, G115, A115, B115, C116, D116, E116, F116, G116, A116, B116, C117, D117, E117, F117, G117, A117, B117, C118, D118, E118, F118, G118, A118, B118, C119, D119, E119, F119, G119, A119, B119, C120, D120, E120, F120, G120, A120, B120, C121, D121, E121, F121, G121, A121, B121, C122, D122, E122, F122, G122, A122, B122, C123, D123, E123, F123, G123, A123, B123, C124, D124, E124, F124, G124, A124, B124, C125, D125, E125, F125, G125, A125, B125, C126, D126, E126, F126, G126, A126, B126, C127, D127, E127, F127, G127, A127, B127, C128, D128, E128, F128, G128, A128, B128, C129, D129, E129, F129, G129, A129, B129, C130, D130, E130, F130, G130, A130, B130, C131, D131, E131, F131, G131, A131, B131, C132, D132, E132, F132, G132, A132, B132, C133, D133, E133, F133, G133, A133, B133, C134, D134, E134, F134, G134, A134, B134, C135, D135, E135, F135, G135, A135, B135, C136, D136, E136, F136, G136, A136, B136, C137, D137, E137, F137, G137, A137, B137, C138, D138, E138, F138, G138, A138, B138, C139, D139, E139, F139, G139, A139, B139, C140, D140, E140, F140, G140, A140, B140, C141, D141, E141, F141, G141, A141, B141, C142, D142, E142, F142, G142, A142, B142, C143, D143, E143, F143, G143, A143, B143, C144, D144, E144, F144, G144, A144, B144, C145, D145, E145, F145, G145, A145, B145, C146, D146, E146, F146, G146, A146, B146, C147, D147, E147, F147, G147, A147, B147, C148, D148, E148, F148, G148, A148, B148, C149, D149, E149, F149, G149, A149, B149, C150, D150, E150, F150, G150, A150, B150, C151, D151, E151, F151, G151, A151, B151, C152, D152, E152, F152, G152, A152, B152, C153, D153, E153, F153, G153, A153, B153, C154, D154, E154, F154, G154, A154, B154, C155, D155, E155, F155, G155, A155, B155, C156, D156, E156, F156, G156, A156, B156, C157, D157, E157, F157, G157, A157, B157, C158, D158, E158, F158, G158, A158, B158, C159, D159, E159, F159, G159, A159, B159, C160, D160, E160, F160, G160, A160, B160, C161, D161, E161, F161, G161, A161, B161, C162, D162, E162, F162, G162, A162, B162, C163, D163, E163, F163, G163, A163, B163, C164, D164, E164, F164, G164, A164, B164, C165, D165, E165, F165, G165, A165, B165, C166, D166, E166, F166, G166, A166, B166, C167, D167, E167, F167, G167, A167, B167, C168, D168, E168, F168, G168, A168, B168, C169, D169, E169, F169, G169, A169, B169, C170, D170, E170, F170, G170, A170, B170, C171, D171, E171, F171, G171, A171, B171, C172, D172, E172, F172, G172, A172, B172, C173, D173, E173, F173, G173, A173, B173, C174, D174, E174, F174, G174, A174, B174, C175, D175, E175, F175, G175, A175, B175, C176, D176, E176, F176, G176, A176, B176, C177, D177, E177, F177, G177, A177, B177, C178, D178, E178, F178, G178, A178, B178, C179, D179, E179, F179, G179, A179, B179, C180, D180, E180, F180, G180, A180, B180, C181, D181, E181, F181, G181, A181, B181, C182, D182, E182, F182, G182, A182, B182, C183, D183, E183, F183, G183, A183, B183, C184, D184, E184, F184, G184, A184, B184, C185, D185, E185, F185, G185, A185, B185, C186, D186, E186, F186, G186, A186, B186, C187, D187, E187, F187, G187, A187, B187, C188, D188, E188, F188, G188, A188, B188, C189, D189, E189, F189, G189, A189, B189, C190, D190, E190, F190, G190, A190, B190, C191, D191, E191, F191, G191, A191, B191, C192, D192, E192, F192, G192, A192, B192, C193, D193, E193, F193, G193, A193, B193, C194, D194, E194, F194, G194, A194, B194, C195, D195, E195, F195, G195, A195, B195, C196, D196, E196, F196, G196, A196, B196, C197, D197, E197, F197, G197, A197, B197, C198, D198, E198, F198, G198, A198, B198, C199, D199, E199, F199, G199, A199, B199, C200, D200, E200, F200, G200, A200, B200, C201, D201, E201, F201, G201, A201, B201, C202, D202, E202, F202, G202, A202, B202, C203, D203, E203, F203, G203, A203, B203, C204, D204, E204, F204, G204, A204, B204, C205, D205, E205, F205, G205, A205, B205, C206, D206, E206, F206, G206, A206, B206, C207, D207, E207, F207, G207, A207, B207, C208, D208, E208, F208, G208, A208, B208, C209, D209, E209, F209, G209, A209, B209, C210, D210, E210, F210, G210, A210, B210, C211, D211, E211, F211, G211, A211, B211, C212, D212, E212, F212, G212, A212, B212, C213, D213, E213, F213, G213, A213, B213, C214, D214, E214, F214, G214, A214, B214, C215, D215, E215, F215, G215, A215, B215, C216, D216, E216, F216, G216, A216, B216, C217, D217, E217, F217, G217, A217, B217, C218, D218, E218, F218, G218, A218, B218, C219, D219, E219, F219, G219, A219, B219, C220, D220, E220, F220, G220, A220, B220, C221, D221, E221, F221, G221, A221, B221, C222, D222, E222, F222, G222, A222, B222, C223, D223, E223, F223, G223, A223, B223, C224, D224, E224, F224, G224, A224, B224, C225, D225, E225, F225, G225, A225, B225, C226, D226, E226, F226, G226, A226, B226, C227, D227, E227, F227, G227, A227, B227, C228, D228, E228, F228, G228, A228, B228, C229, D229, E229, F229, G229, A229, B229, C230, D230, E230, F230, G230, A230, B230, C231, D231, E231, F231, G231, A231, B231, C232, D232, E232, F232, G232, A232, B232, C233, D233, E233, F233, G233, A233, B233, C234, D234, E234, F234, G234, A234, B234, C235, D235, E235, F235, G235, A235, B235, C236, D236, E236, F236, G236, A236, B236, C237, D237, E237, F237, G237, A237, B237, C238, D238, E238, F238, G238, A238, B238, C239, D239, E239, F239, G239, A239, B239, C240, D240, E240, F240, G240, A240, B240, C241, D241, E241, F241, G241, A241, B241, C242, D242, E242, F242, G242, A242, B242, C243, D243, E243, F243, G243, A243, B243, C244, D244, E244, F244, G244, A244, B244, C245, D245, E245, F245, G245, A245, B245, C246, D246, E246, F246, G246, A246, B246, C247, D247, E247, F247, G247, A247, B247, C248, D248, E248, F248, G248, A248, B248, C249, D249, E249, F249, G249, A249, B249, C250, D250, E250, F250, G250, A250, B250, C251, D251, E251, F251, G251, A251, B251, C252, D252, E252, F252, G252, A252, B252, C253, D253, E253, F253, G253, A253, B253, C254, D254, E254, F254, G254, A254, B254, C255, D255, E255, F255, G255, A255, B255, C256, D256, E256, F256, G256, A256, B256, C257, D257, E257, F257, G257, A257, B257, C258, D258, E258, F258, G258, A258, B258, C259, D259, E259, F259, G259, A259, B259, C260, D260, E260, F260, G260, A260, B260, C261, D261, E261, F261, G261, A261, B261, C262, D262, E262, F262, G262, A262, B262, C263, D263, E263, F263, G263, A263, B263, C264, D264, E264, F264, G264, A264, B264, C265, D265, E265, F265, G265, A265, B265, C266, D266, E266, F266, G266, A266, B266, C267, D267, E267, F267, G267, A267, B267, C268, D268, E268, F268, G268, A268, B268, C269, D269, E269, F269, G269, A269, B269, C270, D270, E270, F270, G270, A270, B270, C271, D271, E271, F271, G271, A271, B271, C272, D272, E272, F272, G272, A272, B272, C273, D273, E273, F273, G273, A273, B273, C274, D274, E274, F274, G274, A274, B274, C275, D275, E275, F275, G275, A275, B275, C276, D276, E276, F276, G276, A276, B276, C277, D277, E277, F277, G277, A277, B277, C278, D278, E278, F278, G278, A278, B278, C279, D279, E279, F279, G279, A279, B279, C280, D280, E280, F280, G280, A280, B280, C281, D281, E281, F281, G281, A281, B281, C282, D282, E282, F282, G282, A282, B282, C283, D283, E283, F283, G283, A283, B283, C284, D284, E284, F284, G284, A284, B284, C285, D285, E285, F285, G285, A285, B285, C286, D286, E286, F286, G286, A286, B286, C287, D287, E287, F287, G287, A287, B287, C288, D288, E288, F288, G288, A288, B288, C289, D289, E289, F289, G289, A289, B289, C290, D290, E290, F290, G290, A290, B290, C291, D291, E291, F291, G291, A291, B291, C292, D292, E292, F292, G292, A292, B292, C293, D293, E293, F293, G293, A293, B293, C294, D294, E294, F294, G294, A294, B294, C295, D295, E295, F295, G295, A295, B295, C296, D296, E296, F296, G296, A296, B296, C297, D297, E297, F297, G297, A297, B297, C298, D298, E298, F298, G298, A298, B298, C299, D299, E299, F299, G299, A299, B299, C300, D300, E300, F300, G300, A300, B300, C301, D301, E301, F301, G301, A301, B301, C302, D302, E302, F302, G302, A302, B302, C303, D303, E303, F303, G303, A303, B303, C304, D304, E304, F304, G304, A304, B304, C305, D305, E305, F305, G305, A305, B305, C306, D306, E306, F306, G306, A306, B306, C307, D307, E307, F307, G307, A307, B307, C308, D308, E308, F308, G308, A308, B308, C309, D309, E309, F309, G309, A309, B309, C310, D310, E310, F310, G310, A310, B310, C311, D311, E311, F311, G311, A311, B311, C312, D312, E312, F312, G312, A312, B312, C313, D313, E313, F313, G313, A313, B313, C314, D314, E314, F314, G314, A314, B314, C315, D315, E315, F315, G315, A315, B315, C316, D316, E316, F316, G316, A316, B316, C317, D317, E317, F317, G317, A317, B317, C318, D318, E318, F318, G318, A318, B318, C319, D319, E319, F319, G319, A319, B319, C320, D320, E320, F320, G320, A320, B320, C321, D321, E321, F321, G321, A321, B321, C322, D322, E322, F322, G322, A322, B322, C323, D323, E323, F323, G323, A323, B323, C324, D324, E324, F324, G324, A324, B324, C325, D325, E325, F325, G325, A325, B325, C326, D326, E326, F326, G326, A326, B326, C327, D327, E327, F327, G327, A327, B327, C328, D328, E328, F328, G328, A328, B328, C329, D329, E329, F329, G329, A329, B329, C330, D330, E330, F330, G330, A330, B330, C331, D331, E331, F331, G331, A331, B331, C332, D332, E332, F332, G332, A332, B332, C333, D333, E333, F333, G333, A333, B333, C334, D334, E334, F334, G334, A334, B334, C335, D335, E335, F335, G335, A335, B335, C336, D336, E336, F336, G336, A336, B336, C337, D337, E337, F337, G337, A337, B337, C338, D338, E338, F338, G338, A338, B338, C339, D339, E339, F339, G339, A339, B339, C340, D340, E340, F340, G340, A340, B340, C341, D341, E341, F341, G341, A341, B341, C342, D342, E342, F342, G342, A342, B342, C343, D343, E343, F343, G343, A343, B343, C344, D344, E344, F344, G344, A344, B344, C345, D345, E345, F345, G345, A345, B345, C346, D346, E346, F346, G346, A346, B346, C347, D347, E347, F347, G347, A347, B347, C348, D348, E348, F348, G348, A348, B348, C349, D349, E349, F349, G349, A349, B349, C350, D350, E350, F350, G350, A350, B350, C351, D351, E351, F351, G351, A351, B351, C352, D352, E352, F352, G352, A352, B352, C353, D353, E353, F353, G353, A353, B353, C354, D354, E354, F354, G354, A354, B354, C355, D355, E355, F355, G355, A355, B355, C356, D356, E356, F356, G356, A356, B356, C357, D357, E357, F357, G357, A357, B357, C358, D358, E358, F358, G358, A358, B358, C359, D359, E359, F359, G359, A359, B359, C360, D360, E360, F360, G360, A360, B360, C361, D361, E361, F361, G361, A361, B361, C362, D362, E362, F362, G362, A362, B362, C363, D363, E363, F363, G363, A363, B363, C364, D364, E364, F364, G364, A364, B364, C365, D365, E365, F365, G365, A365, B365, C366, D366, E366, F366

Eighth Notes

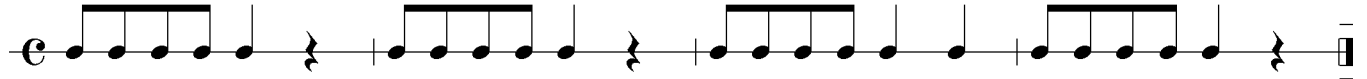
 Two eighth notes
receive one beat in the
4/4 meter signature

Baritone B.C.

33. Rhythm Study

Clap

Write in the Counts



count:

34. Hot Cross Buns



35. Farm Out!



36. Eighth Note Challenge



37. Asked & Answered



Baritone B.C.

Tie

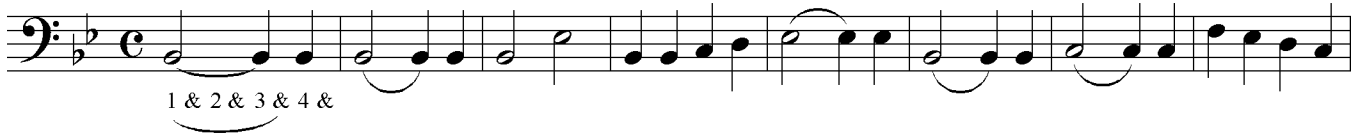


Connects two notes of the same pitch into one sound.

Harmony

Two or more pitches sounding at the same time.

38. Jingle Bells



39. Jolly Old St. Nicholas



40. Up On the Housetop



New Note

A

Meter Signature

Dotted Half Note

Baritone B.C.



$\frac{3}{4}$ 3 beats in a measure
 $\frac{4}{4}$ receives one beat

receives three beats in $\frac{3}{4}$
 or $\frac{4}{4}$ meter signature

41. Skip To My Lou



42. Long, Long Ago



43. The Dotted Half Note



44. Oh, Dear, What Can the Matter Be?



New Note



Baritone B.C.

open

Fermata 

Hold notes under a fermata longer than usual, or until your director cuts you off.

Dynamics

p piano - soft

f forte - loud

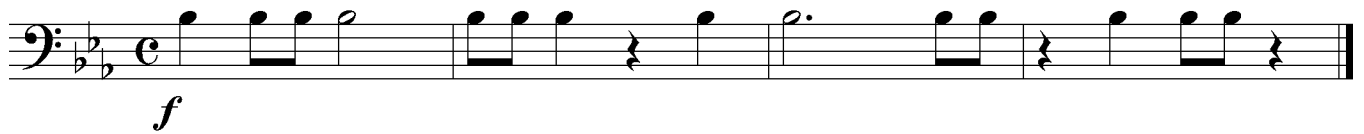
Note

Dynamics are always at the director's discretion.

50. Chorale



51. A New Note



52. Christmas Greetings (A Four Part Round)

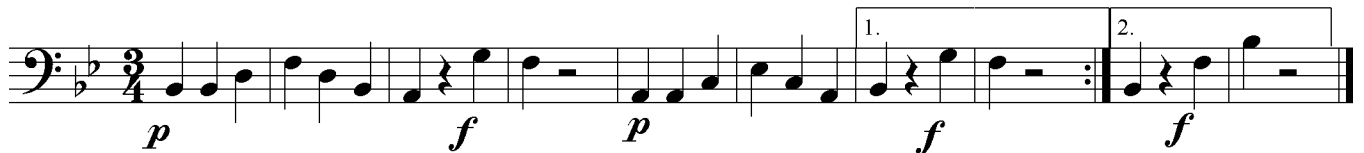
1 2 3 4



53. Red River Valley



54. Mexican Clapping Song



Baritone B.C.

Dynamics

mp moderately soft

mf moderately loud

Slur



Connects notes of different pitch. Tongue only the first note of a slur.

Lip Slur



A slur in which the fingerings of each note are the same

Meter Signature

$\frac{2}{4}$ two beats in a measure
♪ receives one beat

55. Lip Slurs

1 - 2 1 - 2



mf

56. Oranges, Lemons



mf

57. Roll Over



mp

mf

58. Simple Gifts



p



59. Slur Study



f

mp

Baritone B.C.

Articulation
How a note is played

Accent
Emphasize notes with an accent mark.

Legato
Smoothly
Use a soft attack, and hold note for full value.

Staccato
Short
Play in a detached, or separated style.

60. Articulation Study

60. Articulation Study musical notation: Bass clef, common time signature, notes with various articulation marks (accents, slurs, staccato) and dynamic marking *mp*.

61. Surprise!

Franz Josef Haydn
adapted

61. Surprise! musical notation: Bass clef, 2/4 time signature, notes with articulation marks and dynamic markings *p* and *f*.

62. Bingo

62. Bingo musical notation: Bass clef, common time signature, notes with articulation marks and dynamic markings *mf* and *f*.

63. Pictures At an Exhibition


Majestically

Modest Mussorgsky
adapted

63. Pictures At an Exhibition musical notation: Bass clef, common time signature, notes with articulation marks and dynamic marking *f*.

New Note

A




2

Baritone B.C.

Tempo *how fast or slow a piece is played*
Allegro *Fast*
Moderato *Moderate*
Andante *Slow, walking speed*

Eighth Note & Eighth Rest



64. Rhythm Study
Moderato



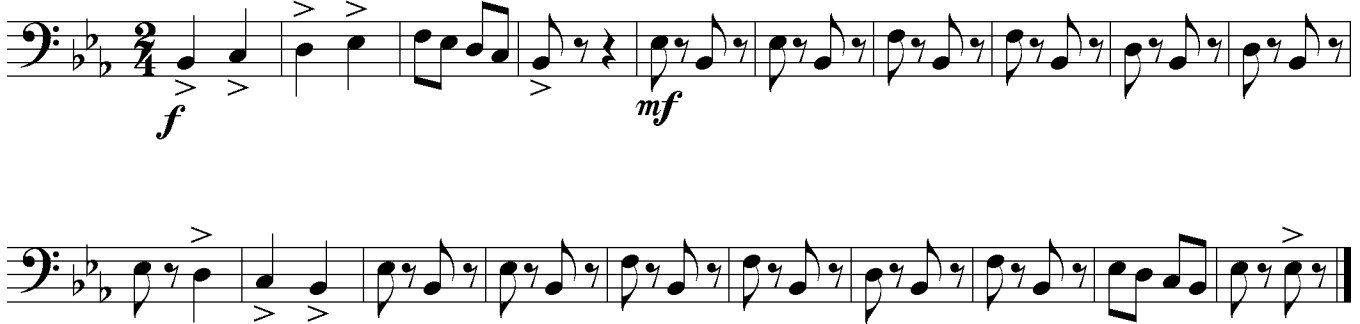
mp

65. A New Note
Moderato



mf

66. March Madness
Allegro



f *mf*

67. Morning
Andante

Edvard Grieg



mp

68. A Mighty Fortress is Our God
Andante



f

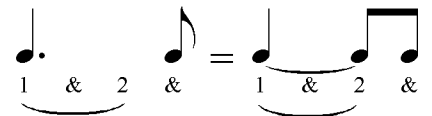
Baritone B.C.

Tempo

Dotted Quarter Note - Eighth Note

Largo

Very slow

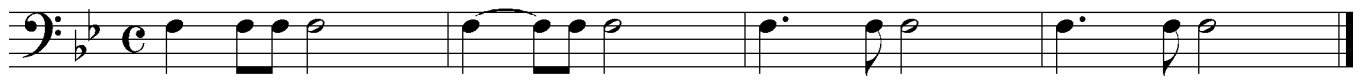


69. B \flat Concert Scale

Moderato



70. Rhythm Study

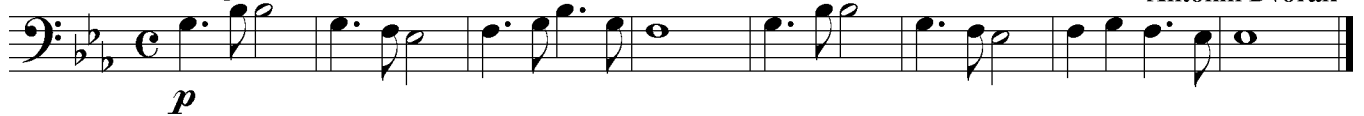


count: 1 & 2 & 3 & 4 & 1 & 2 & 3 & 4 & 1 & 2 & 3 & 4 & 1 & 2 & 3 & 4 &

71. Theme from Symphony No. 9

Largo

Antonin Dvorák



72. Kum Bah Yah

Andante



73. Finale (from The Firebird Suite)

Largo

Igor Stravinsky



Baritone B.C.

Meter Signature

Cut Time

♩ or ♪ two beats in a measure
 ♩ receives one beat

Sixteenth Note Combinations

1 e & a 1 e & 1 & a

74. Rhythm Study
 Moderato

count: 1 & 2 & 3 e & a 4 & 1 & 2 e & 3 & 4 & 1 & a 2 & 3 e & 4 & 1 & 2 e & a 3 & 4 &

mf

75. Button, You Must Wander

Allegro

mf

76. Bright Eyes Will Find You

Andante

mf

Compare this piece to number 75. How are they alike? How are they different?

77. Ten Little Indians Write in the Counts

Moderato

mp

78. Name That Tune Write in the Counts

Moderato

mf

Compare this piece to number 77. How are they alike? How are they different?

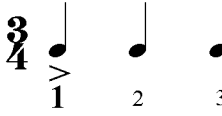
79. Skip To My Lou Revisited

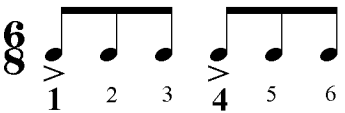
Moderato

f

Baritone B.C.

Compound Meter

$\frac{3}{4}$  a meter in which the beats are divided into three parts.

$\frac{6}{8}$ 

80. When the Saints Go Marching In
Allegro



81. Blow the Man Down
Allegro *in one*



82. For He's a Jolly Good Fellow
Allegro *in one*



83. Yankee Doodle
Allegro



Baritone B.C.

84. London Bridge
Moderato

Musical notation for 'London Bridge' in bass clef, 2/4 time, key of B-flat major. The piece is marked *mf*. The melody consists of eighth and quarter notes.

85. Bridal Chorus
Moderato

Musical notation for 'Bridal Chorus' in bass clef, 2/4 time, key of B-flat major. The piece is marked *f*. The melody features a mix of quarter and eighth notes.

Musical notation for 'Bridal Chorus' in bass clef, 2/4 time, key of B-flat major. The piece is marked *f*. The melody continues with quarter and eighth notes.

86. Can-Can
Allegro

Musical notation for 'Can-Can' in bass clef, 2/4 time, key of B-flat major. The piece is marked *f*. It features a lively melody with eighth notes and accents. The notation includes first and second endings.

87. Scale Study

Start slowly, then speed the tempo as you improve.

Musical notation for 'Scale Study' in bass clef, 4/4 time, key of B-flat major. The piece is marked *f*. It features a scale-like melody with quarter notes.

Musical notation for 'Scale Study' in bass clef, 4/4 time, key of B-flat major. The piece is marked *f*. It features a scale-like melody with quarter notes.

Rhythm Challenge

Go as far as you can without stopping, then work on problem rhythms.

1 2 3 4

5 6 7 8

9 10 11 12

13 14 15 16

17 18 19 20

21 22 23 24

25 26 27 28

29 30 31 32

Rhythm Challenge

33 34 35 36

Measures 33-36 in 3/4 time. Measure 33: quarter note, quarter note, quarter note. Measure 34: quarter note, quarter note, quarter note. Measure 35: quarter note, quarter note, quarter note. Measure 36: quarter note, quarter note, quarter note.

37 38 39 40

Measures 37-40 in common time. Measure 37: eighth note, eighth note, eighth note, eighth note, quarter note, quarter note, quarter note. Measure 38: quarter note, quarter note, eighth note, eighth note, eighth note, eighth note, quarter note, quarter note. Measure 39: quarter note, quarter note, quarter note, quarter note, eighth note, eighth note, quarter note, quarter note. Measure 40: eighth note, eighth note, eighth note, eighth note, quarter note, quarter note, quarter note, quarter note.

41 42 43 44

Measures 41-44 in common time. Measure 41: eighth note, eighth note, eighth note, eighth note, quarter note, quarter note, quarter note, quarter note. Measure 42: eighth note, eighth note, eighth note, eighth note, quarter note, quarter note, quarter note, quarter note. Measure 43: eighth note, eighth note, eighth note, eighth note, quarter note, quarter note, quarter note, quarter note. Measure 44: eighth note, eighth note, eighth note, eighth note, quarter note, quarter note, quarter note, quarter note.

45 46 47 48

Measures 45-48 in common time. Measure 45: quarter note, quarter note, quarter note, quarter note. Measure 46: quarter note, quarter note, quarter note, quarter note. Measure 47: quarter note, quarter note, quarter note, quarter note. Measure 48: quarter note, quarter note, quarter note, quarter note.

49 50 51 52

Measures 49-52 in common time. Measure 49: quarter note, quarter note, quarter note, quarter note. Measure 50: quarter note, quarter note, quarter note, quarter note. Measure 51: quarter note, quarter note, quarter note, quarter note. Measure 52: quarter note, quarter note, quarter note, quarter note.

53 54 55 56

Measures 53-56 in 2/4 time. Measure 53: quarter note, quarter note, quarter note, quarter note. Measure 54: quarter note, quarter note, quarter note, quarter note. Measure 55: quarter note, quarter note, quarter note, quarter note. Measure 56: quarter note, quarter note, quarter note, quarter note.

57 58 59 60

Measures 57-60 in 2/4 time. Measure 57: quarter note, quarter note, quarter note, quarter note. Measure 58: quarter note, quarter note, quarter note, quarter note. Measure 59: quarter note, quarter note, quarter note, quarter note. Measure 60: quarter note, quarter note, quarter note, quarter note.

61 62 63 64

Measures 61-64 in 6/8 time. Measure 61: quarter note, quarter note, quarter note, quarter note, quarter note, quarter note. Measure 62: quarter note, quarter note, quarter note, quarter note, quarter note, quarter note. Measure 63: quarter note, quarter note, quarter note, quarter note, quarter note, quarter note. Measure 64: quarter note, quarter note, quarter note, quarter note, quarter note, quarter note.